



ONE OF THESE IS A
MOTOROLA ORIGINAL.

CAN YOU SEE
THE DIFFERENCE?

Motorola batteries are co-developed with the radios they are designed for. Such precise compliance is necessary to ensure the radio's maximal transmission and reception coverage. The batteries are also subjected to meticulous testing to verify their operational capability when operating in diverse conditions. Our Intrinsically Safe products meet formal safety agency certifications, such as the Factory Mutual Research Corporation (FM). We are also a recurrent winner of the prestigious Malcolm Baldrige National Quality Award for manufacturing excellence. Users can rest assured that their Motorola radios and batteries will ably support them under the most extreme situations, safely and reliably.

STOP COUNTERFEIT!

Please contact your local Motorola authorised distributors if you have any information pertaining to any counterfeit Motorola products. Alternatively, you can contact the Motorola Intellectual Property Enforcement Group at the address provided below. We assure you that your name will be kept anonymous.

AUSTRALIA

Motorola Australia Pty. Ltd
Tel.: 61-3-9847-7500
Fax: 61-3-9847-7501

CHINA

Beijing Branch
Motorola (China) Electronics Ltd.
Tel.: 86-10-6564-2288
Fax: 86-10-6564-2299

Guangzhou

Representative Office
Motorola (China) Electronics Ltd.
Tel.: 86-20-8753-7888
Fax: 86-20-8753-8308

Shanghai

Representative Office
Motorola (China) Electronics Ltd.
Tel.: 86-21-5292-5800
Fax: 86-21-5292-5497

Chengdu

Representative Office
Motorola (China) Electronics Ltd.
Tel.: 86-28-8652-8598
Fax: 86-28-8652-8560

HONG KONG SAR

Motorola Asia Pacific Ltd
Tel.: 852-2966-4366
Fax: 852-2966-4363

INDIA

Motorola India Ltd
Tel.: 91-124-230-3212
Fax: 91-124-230-4766

INDONESIA

Motorola International Inc.
Tel.: 62-21-251-3050
Fax: 62-21-251-3040

JAPAN

Motorola Japan Ltd
Tel.: 81-3-3280-8521
Fax: 81-3-3440-0335

KOREA

Motorola Korea Inc.
Tel.: 822-2018-4000
Fax: 822-2018-4867

MALAYSIA

Motorola Technology Sdn Bhd
Tel.: 60-3-7803-9922
Fax: 60-3-7803-2488

NEW ZEALAND

Motorola NZ Pte Ltd
Tel.: 649-915-7705
Fax: 649-915-7706

PHILIPPINES

Motorola Incorporated
Tel.: 632-810-0762
Fax: 632-812-9116

SINGAPORE

(Asia-Pacific Headquarters)
Motorola Electronics Pte Ltd
Tel.: 65-6481-7200
Fax: 65-6483-4313

TAIWAN

Motorola Electronics Taiwan Ltd
Tel.: 8862-2705-8000
Fax: 8862-2704-6112

THAILAND

Motorola (Thailand) Ltd
Tel.: 66-2-653-2220
Fax: 66-2-254-5922

VIETNAM

Motorola Vietnam Telecomm Co.
Tel.: 844-933-1088
Fax: 844-933-1089



Motorola Electronics Pte Ltd

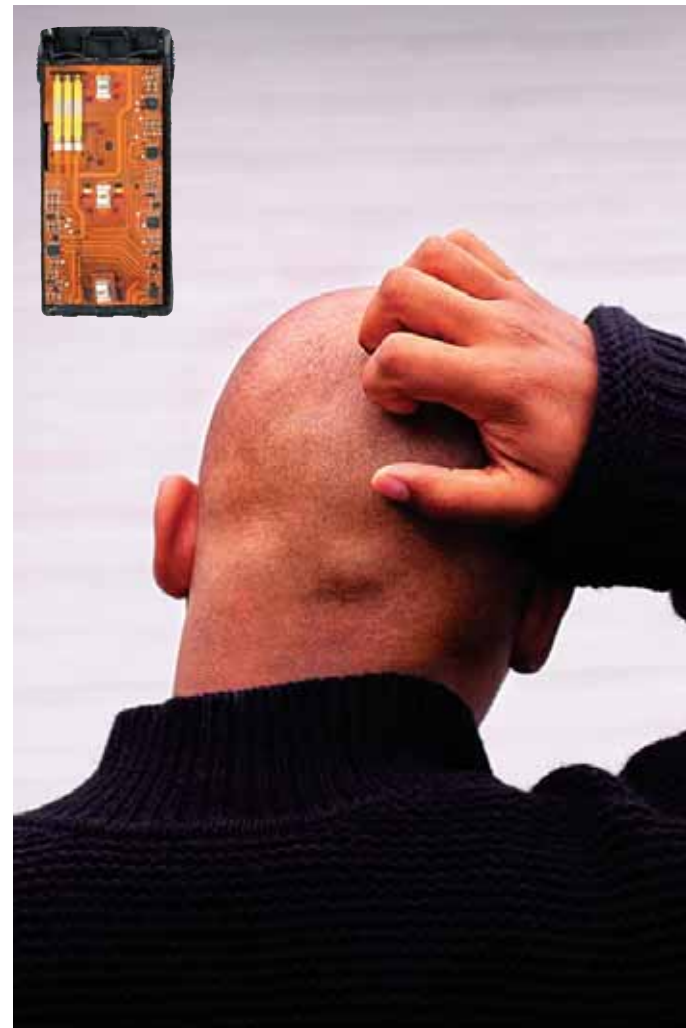
MIC Level 7, 12 Ang Mo Kio Street 64
Ang Mo Kio Industrial Park 3, Singapore 569088
www.motorola.com/governmentandenterprise



MOTOROLA and the Stylized M Logo are registered in the U.S. Patent and Trademark Office. All other products or service names are the property of their registered owners. ©Motorola, Inc. 2006

AF4-04-011 Rev.1

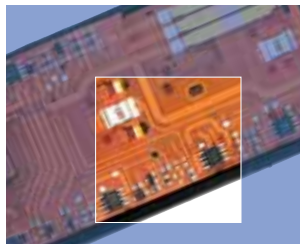
IT'S WHAT'S INSIDE THAT COUNTS.



MOTOROLA ORIGINAL



- Flexible soft copper flex technology.
- Fully automated production process.
- Better able to withstand drops/shocks.



- Built-in safety components especially in Lithium Ion, ensure personal safety.



- Automated spot welding to battery cells.
- Maximises power and ensures long lasting performance

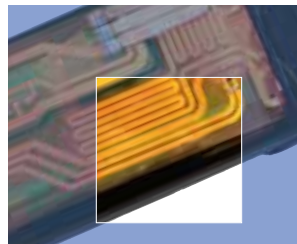


- Automated surface mount.
- Consistent reliable performance.

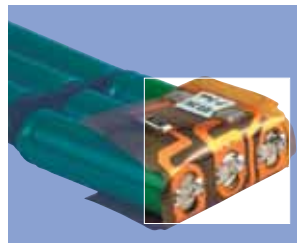
THE COUNTERFEIT



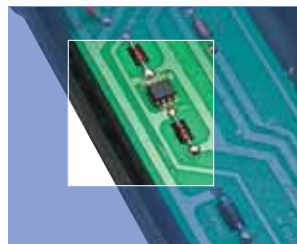
- Typically wires or metal strips.
- Manual assembly.
- May be dislodged during drops/shocks.



- Typically uses inferior electrical components that may not guarantee full protection.



- Cell is hand soldered.
- Poor soldering may degrade battery capacity and lifespan.



- Hand soldering may introduce human error.
- May cause inconsistent battery performance.

ARE YOU AWARE OF WHAT A TYPICAL COUNTERFEIT BATTERY CAN DO TO YOU?

So you think getting a typical counterfeit* battery may be easier on your wallet...for now. However, quality and safety problems may surface only upon extended usage. Do be aware of the risks that you undertake when you choose the wrong battery.

IT MAY REDUCE THE SENSITIVITY OF THE RADIO

As a typical counterfeit battery may deviate from the exact specifications of the radio, it may cause the latter to be 'desensitised'. Radio coverage may drop, and your emergency call may go unheard...

IT MAY GIVE AN INACCURATE BATTERY STRENGTH INDICATION

A typical counterfeit battery may be incompatible with the charger and fail to obtain an optimum charge. The lack of smart chip in them may also lead to a false reading on the battery strength indicator, adversely affecting the radio's 'Low Battery' gauge.

IT LOWERS YOUR EFFICIENCY

The advantage of having an 'always-on' mode of communication is lost if shorter battery life, poorer transmission and unreliable performance were to plague you.

IT MAY NOT BE DURABLE ENOUGH

The materials used in the manufacture of a typical counterfeit battery may not be strong enough to withstand hard knocks, drops or temperature extremes. Constant replacement of less durable batteries may end up costing more than what you bargained for.

IT MAY COMPROMISE YOUR SAFETY

Typical counterfeit batteries may not be designed with the acceptable margin of safety or lack certain safety components. This could ultimately endanger your safety.

IT MAY HAVE A SHORT LIFESPAN

Alas, the frustrating problem of "my battery died on me prematurely". A typical counterfeit battery may not use premium grade cells, resulting in shorter battery life and overall battery lifespan.